

2022 LAUNCH

Liftoff to a great year!

**Illinois PTA Northwest Cook Region
PTA LAUNCH 2022–2023 Packet**

PTA Mission:

To make every child's potential a reality by engaging and empowering families and communities to advocate for all children.



District 37 Board – 2022–2023



Director	Jeanette Harris	jharris@ilpta-d37.org	PAL	(630) 880-0098
Secretary	OPEN			
Treasurer	Barb Quinn	bquinnpta@aol.com	EGV	(847) 985-9078
Advocacy				
Health & Safety	OPEN			
Leg. Consultant	Barbara Quinn	bquinnpta@aol.com	EGV	(847) 985-9078
Parent Ed	Matthew John Rodriguez	tazcubano@aol.com		
Awards	OPEN			
Communications				
Social Media	Nicole Fentem	nfentem@ilpta-d37.org	SCH	
Newsletter	April Weaver	aprilweaver78@gmail.com	PAL	
Website	Heather Lepold	heatherlepold@gmail.com	AH	
Hospitality	OPEN			
Leadership Development	OPEN			
MemberHub	Jim Sklena	jimsklena@gmail.com	HE	
Membership	Julie Holdeman	julie.holdeman@comcast.net	PAL	
Parent Engagement	Angelica A. Parra	alejandra7676@aol.com		
Reflections	Angelica A. Parra	alejandra7676@aol.com		

Council Presidents

AHC	Nicole Barbieri	nmbarbieri12@gmail.com	AH	
NWSC	Dan McCullough	dbmnazgul@gmail.com	RM	
STC	Cheryl Gleason	cgleason828@sbcglobal.net	SCH	

2022–2023 Calendar



NWCR/D37 PTA LAUNCH

August 4, 2022

Northwest Cook Region Annual Meeting

October 18, 2022 (TBD) Illinois PTA-NWCR

Reflections Dates

Theme “Show Your Voice”

November 4, 2022	Projects due from local unit PTAs to councils
December 9, 2022	Projects due from councils to NWCR
January 14, 2023	Projects due from NWCR to IL PTA
March 16, 2023	NWCR Reflections Reception
May 7, 2023	Reflections Spotlight Event (TBD)

Training/Workshop Timeline

Fall- September

Winter- January

Summer- June

PTA Conventions and Conferences

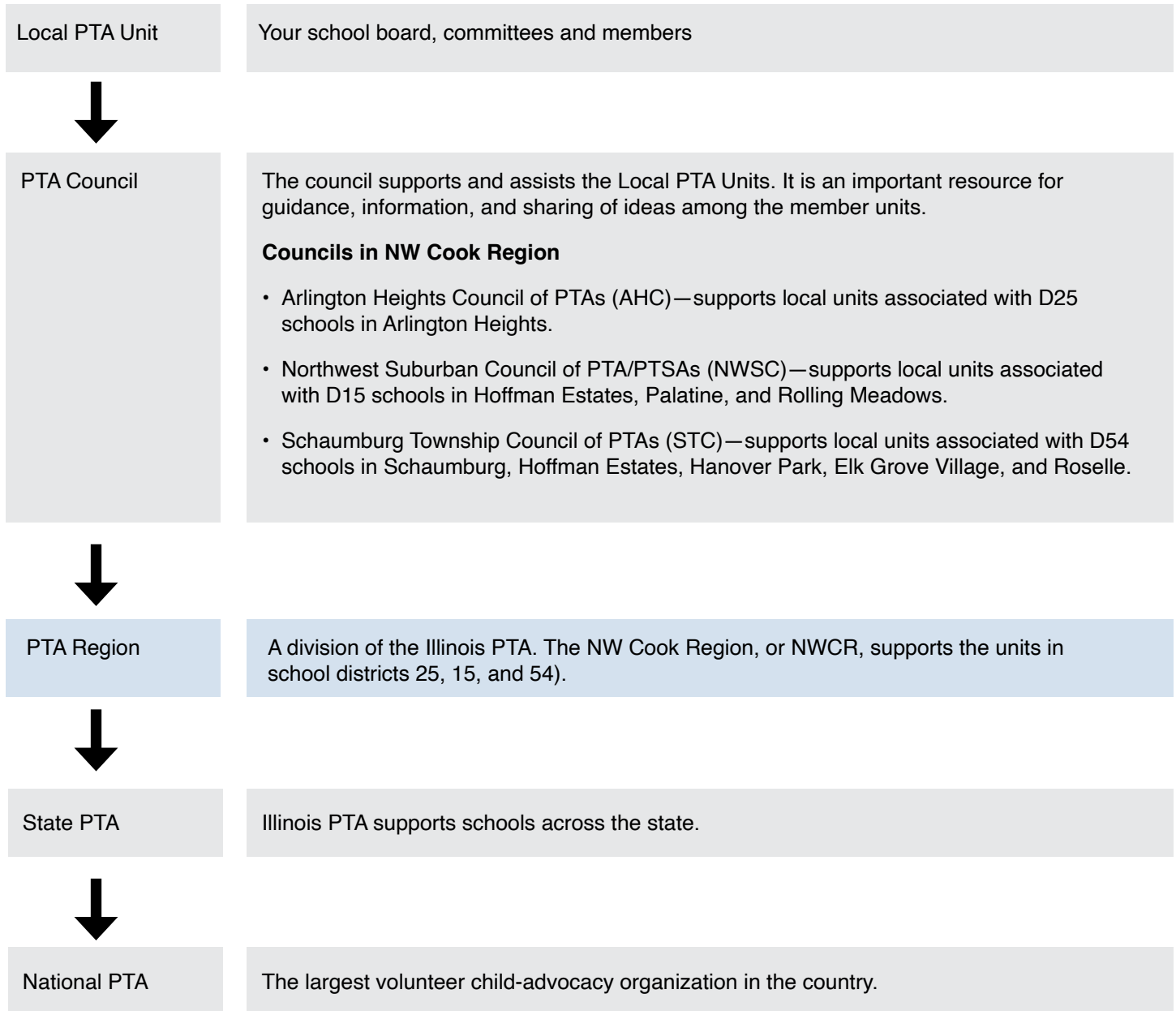
TBD

June 22–25, 2023 (Virtual)

Illinois PTA Advocacy Day/Convention

Legislative Conference/National PTA Convention

Your PTA Support Structure



Mark Your 2022–2023 Calendar

Use this checklist to make sure your PTA doesn't miss any deadlines or opportunities to promote the mission and purposes of the PTA!

Month	Dates/Actions To Remember	Start Planning NOW
July 2022	<ul style="list-style-type: none"> Set PTA goals Officers submit Plan of Work Reports to President Work with Budget Committee to draft a budget Budget for Illinois PTA Convention expense, Council dues & Region donation Prior year president to complete Region Honor Awards Meet PTA Board 	<ul style="list-style-type: none"> School of Excellence Enrollment—open May 1-Oct 1 National PTA Reflections Program—2022–2023 theme: “Show Your Voice!”
August 2022	<ul style="list-style-type: none"> AUG 4—Attend NW Cook Region LAUNCH Meeting Attend Fall Training/share info with fellow officers/local leaders Set Local Unit Meeting Dates (Board & General Membership) Ensure Audit is completed & budget created Finalize PTA goals & distribute procedure books Ensure new PTA memberships are entered in MemberHub (throughout the year) 	<ul style="list-style-type: none"> Promote your Reflections Program (thru Oct) Consider enrolling in School of Excellence Program (thru Oct) Run a Membership Campaign
September 2022	<ul style="list-style-type: none"> Renew PTA insurance (record in MemberHub) Present audit & budget to General Membership for adoption New memberships are entered in MemberHub 	<ul style="list-style-type: none"> Promote your Reflections Program (thru Oct) Promote annual membership Arts in Education Week (Sep 11–17) Back to School Week (Sep 12–16)
October 2022	<ul style="list-style-type: none"> OCT 1—DEADLINE to remit 1st payment of State Dues via MemberHub (@ \$4.50/member) OCT 18—Attend NW Cook Region Annual Meeting (please invite school administrators and local unit leaders) Record Liability Insurance in MemberHub and provide proof of insurance to your school district New memberships are entered in MemberHub 	<ul style="list-style-type: none"> Promote your Reflections Program (thru Oct) Walk to School Day (various days in Oct)
November 2022	<ul style="list-style-type: none"> Record filing of IRS Forms (990) in MemberHub Record adopted Audit in MemberHub New memberships are entered in MemberHub Remit outstanding State Dues via MemberHub 	<ul style="list-style-type: none"> Election Day (Nov 8) Reflections—projects due from local units to Council Illinois PTA Advocacy Day—TBD
December 2022	<ul style="list-style-type: none"> New memberships are entered in MemberHub Remit outstanding State Dues via MemberHub 	<ul style="list-style-type: none"> Reflections—projects due from Councils to Region (Dec 9) Advocacy—Submit proposed amendments to the Illinois PTA Legislative Platform by Dec 1st
January 2023	<ul style="list-style-type: none"> Attend Winter Training and share info with your board Begin review of Bylaws and/or Procedure Books New memberships are entered in MemberHub Remit outstanding State Dues via MemberHub Recruit the Nominating Committee 	<ul style="list-style-type: none"> Reflections advancing projects due from Region to State and Celebrate Advocacy—Submit Resolutions to Illinois PTA in January.
February 2023	<ul style="list-style-type: none"> New memberships are entered in MemberHub Remit outstanding State Dues via MemberHub 	<ul style="list-style-type: none"> Safer Internet Day (Feb 14) National PTA Founder’s Day (Feb 17)
March 2023	<ul style="list-style-type: none"> New memberships are entered in MemberHub Remit outstanding State Dues via MemberHub Register for Illinois PTA Convention 	<ul style="list-style-type: none"> Reflections—Region Advancers Celebration (Mar 16) & State Advancers announced
April 2023	<ul style="list-style-type: none"> New memberships are entered in MemberHub Remit outstanding State Dues via MemberHub 	<ul style="list-style-type: none"> Primary Election Day (Apr 4) Earth Day (Apr 22) Arbor Day (Apr 29) NW Cook Region Award(s) submissions deadline (Apr 15)
May 2023	<ul style="list-style-type: none"> Ensure memberships are entered in MemberHub Remit outstanding State Dues via MemberHub Submit End of Year Reports to President Wrap-up end-of-year activities and membership 	<ul style="list-style-type: none"> Teacher Appreciation Week (May 1-5) Bike to School Day (various days in May) Reflections—National winners announced early May and SPOTLIGHT (May 7)
June 2023	<ul style="list-style-type: none"> JUN 25—remit final membership dues via MemberHub Register next year’s officers via MemberHub Attend Summer Training/share info with your board 	<ul style="list-style-type: none"> Remember to thank your volunteers!

General Interest Resources



Area of Interest	Consider these Ideas/Resources
Parent Support/Information	Listen/promote “Notes from the Backpack”, A PTA podcast Access resources on pta.org under Family Resources ; topics on “Health” (including mental health), “Safety”, and “Parents’ Guides to Student Success”. Check-out National PTA Events that support families on pta.org. Enroll in the National PTA’s School of Excellence program at PTA.org/Excellence .
Family Reading	Access resources on pta.org under “Family Reading Experience” under Programs on pta.org Look into the Illinois Secretary of State Annual Reading Night , Nov 18
Promote the Arts/Arts in Education	Register to host a PTA Reflections Program at PTA.org/Reflections . The 2022-2023 Reflections theme is “Show Your Voice!” Stay connected with @NationalPTA and #PTAReflections as they share and celebrate artwork throughout the year! Learn how to lead a PTA ArtsEd Project and connect to resources at PTA.org/ArtsEd .
Diversity, Equity, & Inclusion	Access DEI resources under “Run Your PTA” on pta.org. Learn how ArtsEd and DEI can uplift student voices at PTA.org/ArtsEd .
STEM/STEAM	Access program resources for “STEM + Families” on pta.org. Look into National STEM/STEAM Day – Nov. 8
Digital Life/ Digital Citizenship	Access program resources for “PTA Connected” on pta.org Look into Safer Internet Day on Feb. 14, 2023
Promote Good Health for Body & Mind	Access program resources for Healthy Lifestyles on pta.org; look for specific topics like “Healthy Bodies”, “Healthy Minds” and “Healthy Earth” Access program resources for Connect for Respect on pta.org; programs like “Be Internet Awesome” or “The Smart Talk” National PTA Healthy Lifestyles Month is November Check out “The Center for Family Engagement” for resources on how to support a better today and tomorrow Look for ways to support existing programs in your local community
Advocacy & Local Government	Access resources on pta.org under Advocacy ; like how to “Take Action” Access state level advocacy resources from Illinoispta.org League of Women Voters in Palatine or League of Women Voters in AH/BG/MP

PTA Leader Resources at Your Fingertips



Northwest Cook Region PTA Resources:

Northwest Cook Region PTA Website: www.ilpta-d37.org

Northwest Cook Region Facebook: www.facebook.com/NWCookRegion

Illinois PTA Resources:

Illinois PTA website: www.illinoispta.org

• <https://illinoispta.org/leadership-resources/>

- **Password:**

- Digital Reference Guides & forms, resources, programs, awards

- /Membership (resources, incentive contests, awards)

- /MemberHub (links to training, unit info, compliance items, document archive, custom website)

• www.illinoispta.org/advocacy

- Advocacy Toolkit, Voter Voice, Take-action

Illinois PTA on Social Media:

Illinois PTA on Facebook at: www.facebook.com/IllinoisPTA

Illinois PTA on Twitter: @illinoispta www.twitter.com/illinoispta

Illinois PTA on YouTube: Illinois PTA

Illinois PTA on Pinterest: www.pinterest.com/illinoispta/

National PTA Resources:

National PTA website: www.pta.org

National PTA E-learning: www.pta.org/elearning

National PTA Local Leader Kit: www.pta.org/local-leader-kit

National PTA Branding & Web Guidelines: www.pta.org/home/run-your-pta/PTA-Branding-and-Web-Guidelines

National PTA Membership: www.pta.org/home/run-your-pta/membership

Campaign Resources: : www.pta.org/home/run-your-pta/membership-campaign

National PTA Diversity & Inclusion Toolkit: www.pta.org/home/run-your-pta/Diversity-Inclusion-Toolkit

National PTA Spanish Resources: www.pta.org/home/run-your-pta/Spanish-Resources

National PTA Reflections: www.pta.org/home/programs/reflections

National PTA STEM: www.pta.org/home/programs/stem

National PTA Connected (Internet Safety): www.pta.org/home/programs/connected

National PTA Advocacy Toolkit: www.pta.org/AdvocacyToolkit

National PTA On Social Media

National PTA on Facebook: www.facebook.com/NationalParentTeacherAssociation

National PTA on Twitter: @National PTA

National PTA on Instagram: www.instagram.com/nationalpta/

National PTA on YouTube: www.youtube.com/nationalpta/

National PTA on Pinterest: www.pinterest.com/nationalpta/

Extra Resources

Illinois Report Card website

Your School District's website

Alderman/public official contact

Google tools: forms, file sharing and archive ability

Illinois PTA | Northwest Cook Region | District 37

PTA Membership Recognition



“Reach for the Stars”

Illinois PTA has a new membership recognition program to honor PTAs, PTA Councils, and Regions that grow and support PTA membership. The tiered program is structured for PTAs to build on their success year after year.

Rewards

Recognition will be awarded based on the level of membership growth a PTA has attained. The rewards are as follows:

- **Bronze Star:** Digital awards identifying the PTA as a “Bronze Star PTA” sized for use on social media and websites, physical recognition certificate that can be displayed at school, recognition on the Illinois PTA website.
- **Silver Star:** All the Bronze Star rewards plus recognition in the Illinois PTA Convention Program.
- **Gold Star:** All the Silver Star rewards plus recognition during the Illinois PTA Convention Awards event.
- **Platinum Star:** All the Gold Star rewards plus a vinyl recognition banner with reinforced grommets that can be displayed at the school or at PTA events with the year of recognition included.



You will receive your unit’s number of memberships for each category in the welcome letter from President McCarty.

Ways to bring in members

- In August—Back to School Membership Campaign Kick-off, Ask EVERYONE to join
- In September—Join PTA to be included in the PTA directory or other incentive, remind former members who have forgotten to join again
- In November—Special Thank you to Your Members; Member Appreciation Event
- In January—New Year/New Member Campaign, look for parents who have never joined before and ASK them to join
- In April/ May—Welcome incoming families at Kindergarten/New Student Registration; share info on PTA and membership process for following fall

Local Unit Honor Award Application

We invite you to complete the [LU Honor Award Application Google Form](#). Answer all of the questions or just what you can; no matter, we want to hear from you



Local Unit Honor Award Application 2022-2023

You Did It! You made it through an unbelievable year!! Let's celebrate making it through this crazy year! Share something you tried, new partnerships made, experiences learned from, the highs and lows and everything in between. Answer all of the questions OR just what you can. Tell us something about your PTA to brag about.